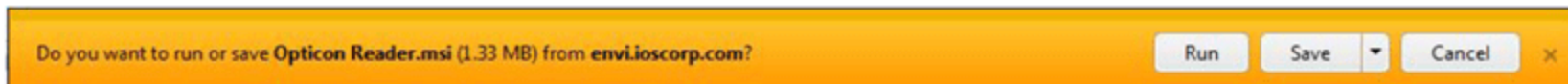


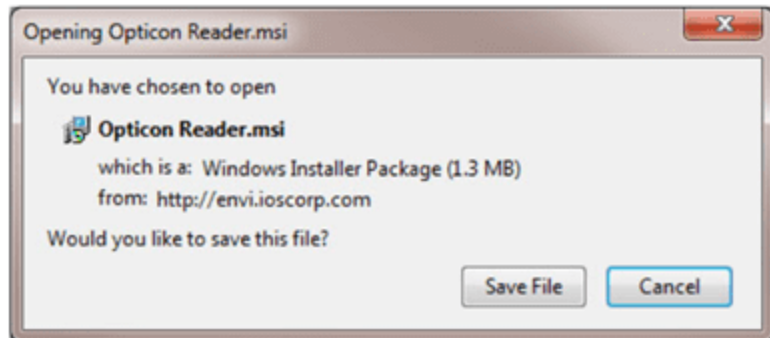
How to Set up Your Computer to Use the Opticon Mobile Scanner

If this is the first time using the Opticon barcode scanner with your computer, you must first install the scanner controller within your browser. You have to perform this installation only once.

1. Perform your order entry using the [How to Create Purchase Orders Using Order Entry](#) instructions. Before uploading items from the scanner, click the **Resources** tab.
2. Click the **Setup Opticon Reader** link. In Internet Explorer, a bar similar to the following appears:



In other browsers, the following popup message may appear instead:



3. Install the file on your computer (if you save the file first, you may have to navigate to the saved location and run the file from there).
4. When the setup application finishes, your computer is ready to communicate with the Opticon scanner.

 You may also need to [install the software onto the Opticon scanner](#).

Related Topics

[Frequently Asked Questions](#)

[Step-by-Step List: Purchasing](#)

[How to Install the Software onto the Opticon 9728 Scanner](#)

[How to Install the Software onto the Opticon 1004 Scanner](#)